



ALBERT COURT, PRINCE CONSORT ROAD, LONDON, SW7



A STUNNING THREE BEDROOM APARTMENT SITUATED ON THE FIFTH FLOOR (WITH LIFT) OF THIS BEAUTIFUL MANSION BLOCK LOCATED BESIDE THE ROYAL ALBERT HALL, ON THE BORDERS OF SOUTH KENSINGTON AND KNIGHTSBRIDGE.

This beautiful apartment comprises over 1,427 of lateral accommodation. Arched doorways and high ceilings create an opulent living space with a spacious and bright reception room, a dining area and a modern, well-appointed kitchen. There are three well-proportioned double bedrooms, each with an en suite bath or shower room and built in wardrobes. This exceptional building is well maintained and benefits from a lift and a porter. There are also plans to redevelop the basement area in to a resident's spa and gym.





Albert Court is an iconic and prestigious Grade II listed building which boasts a spectacular entrance hall and an extremely efficient team of porters. Moments away are the open spaces of Hyde Park and Kensington Gardens (Approx. 0.3 miles) and the numerous amenities and travel facilities of South Kensington (Approx. 0.5 miles). In addition, there are a number of famous attractions nearby, such as the Royal Albert Hall, the V&A museum and Natural History Museum.

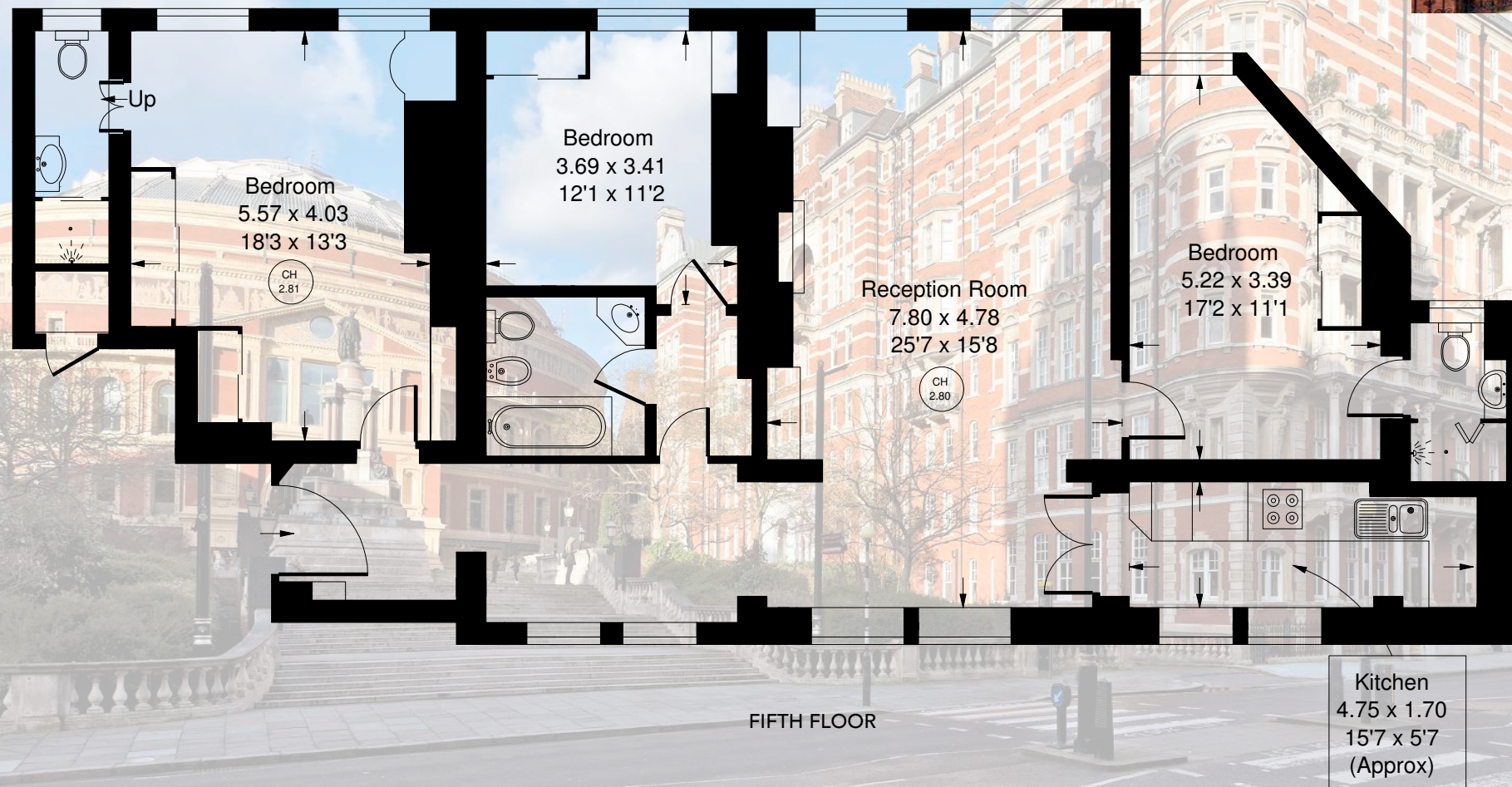
TERMS

Asking Price £2,450,000 | Tenure Leasehold (approximately 978 years remaining, expiring 29.09.2999) | Service Charge £6174 per annum | Ground Rent £150 per annum, rising to £600 | Local Authority City of Westminster



Key :
CH - Ceiling Height

APPROXIMATE GROSS INTERNAL AREA
1,427 SQUARE FEET 132.6 SQUARE METRES
(INCLUDING EXTERNAL CUPBOARD)



Score	Energy rating	Current	Potential
92+	A		
81-91	B		81 B
69-80	C		
55-68	D	65 D	
39-54	E		
21-38	F		
1-20	G		

MASKELLS

71 WALTON STREET, LONDON, SW3 2HT
+44 (0)207 581 2216
www.maskells.co.uk sales@maskells.co.uk

We wish to advise prospective purchasers that we have prepared these sales particulars as a rough guide. We have not carried out a detailed survey or tested the services, appliances or specific fittings. Measurements are approximate.