



EMBANKMENT GARDENS | CHELSEA SW3



ON THE FIRST FLOOR OF A HIGHLY REGARDED AND HANDSOME PERIOD BUILDING, THIS IS A BEAUTIFULLY BRIGHT FIRST FLOOR (WITH LIFT), 2 BEDROOM FLAT WITH HIGH CEILINGS AND A MOST CHARMING OUTLOOK.

Of particular note is an excellent open plan kitchen and reception room with a ceiling height of over 3.3 meters. There are windows on two sides which ensures that the room is flooded with natural light and there are wonderful views towards the greenery beyond. Moving through the flat, there is a good master bedroom towards the rear, again with windows on two sides. There is built in storage and an en-suite bathroom with stand-alone shower and double sinks. Adjacent is a second bedroom supported by a second shower room which is also used as the guest cloakroom. Of particular note are two large storage cupboards which extend to over the bathrooms and provide ample storage. There is also access to a pretty communal garden to the rear of the building, reserved for use by residents only.





Embankment Gardens is a popular and quiet Chelsea enclave by the river. Sloane Square Station (District and Circle Lines) is 0.9 miles away and the wide open spaces of Battersea Park are a short walk over either Albert or Chelsea Bridges.

ACCOMMODATION

Reception Room / Kitchen | Master Bedroom en-suite Bathroom | Second Bedroom | Bathroom
Ample Storage | Communal garden | EPC D

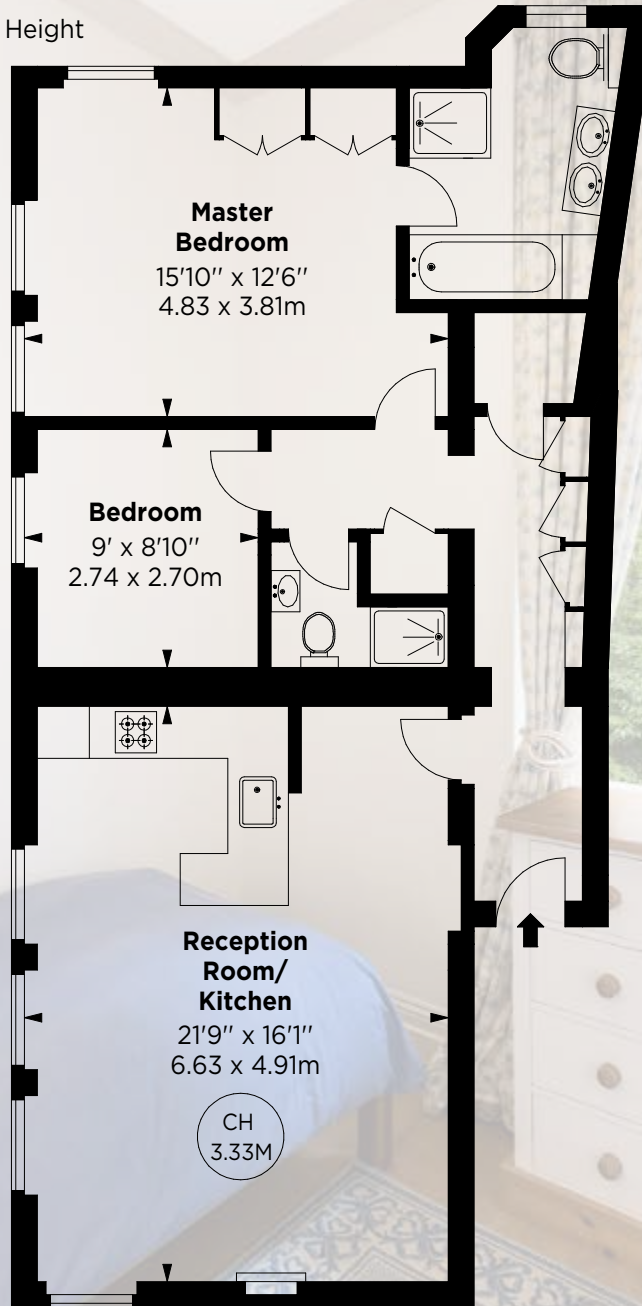
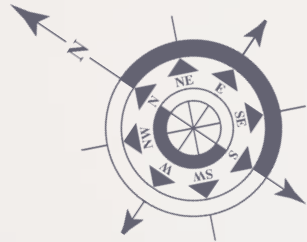
TERMS

Asking Price £1,395,000 | Tenure Leasehold, expiring 23rd September 2136 | Service Charge £6,329.30 for the year ending 24th June 2020 | Ground Rent Peppercorn
Local Authority The Royal Borough of Kensington and Chelsea

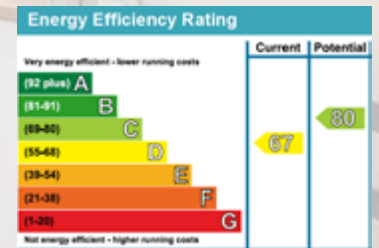


APPROXIMATE GROSS INTERNAL AREA
897 SQUARE FEET 83.33 SQUARE METRES

Key :
CH - Ceiling Height



First Floor



MASKELLS

71 WALTON STREET, LONDON, SW3 2HT
+44 (0)207 581 2216
www.maskells.co.uk sales@maskells.co.uk

We wish to advise prospective purchasers that we have prepared these sales particulars as a rough guide. We have not carried out a detailed survey or tested the services, appliances or specific fittings. Measurements are approximate.