



CRANMER COURT CHELSEA SW3

SITUATED ON THE GROUND FLOOR OF A HIGHLY REGARDED PORTERED BLOCK, THIS IS A SUPER ONE-BEDROOM FLAT THAT WOULD MAKE THE IDEAL PIED A TERRE







Within a stones throw is the ever-popular Chelsea Green, which offers a wonderful collection of boutique shops, convenience stores, caf  s and restaurants.

Cranmer Court is a sought-after purpose-built block of flats which benefits from an excellent team of porters. Within easy reach are the shops of The Kings Road and South Kensington. Sloane Square Station (District and Circle Lines) is 0.5 miles away and South Kensington Station (District, Circle and Piccadilly Lines) is also 0.5 miles away.

GROSS INTERNAL AREA (APPROX)  
478 SQ FT / 44.4 SQ M  
INCLUDING LIMITED USE AREA  
(7 SQ FT / 0.7 SQ M)

Asking price: £625,000

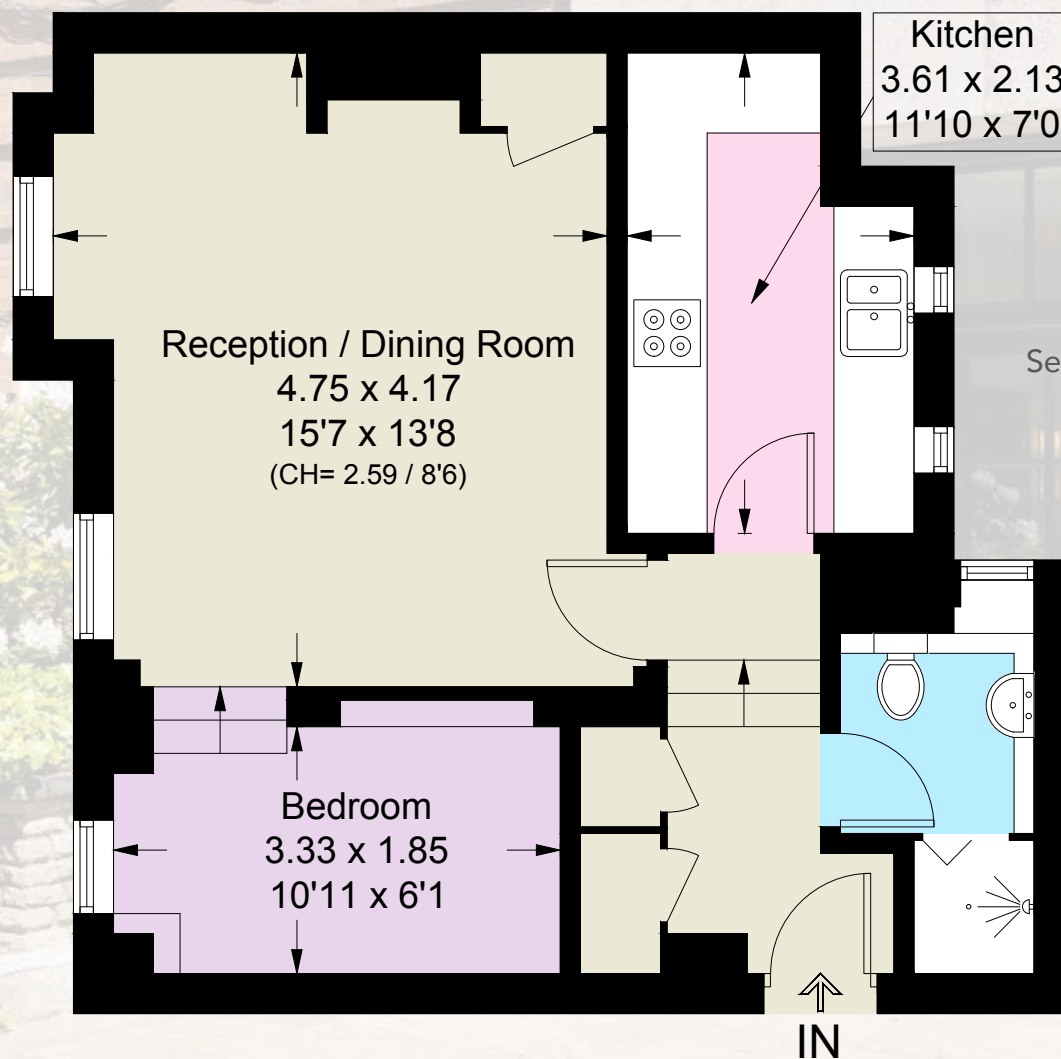
Tenure: Share of Freehold

Local Authority:

The Royal Borough of Kensington and Chelsea

Service Charge (including contribution to Reserve Fund):

£4,602 PA



GROUND FLOOR



Score	Energy rating	Current	Potential
92+	A		
81-91	B		
69-80	C		
55-68	D	67   D	74   C
39-54	E		
21-38	F		
1-20	G		

We wish to advise prospective purchasers that we have prepared these sales particulars as a rough guide. We have not carried out a detailed survey or tested the services, appliances or specific fittings. Measurements are approximate.

**MASKELLS**

71 WALTON STREET, LONDON, SW3 2HT  
+44 (0)207 581 2216  
[www.maskells.co.uk](http://www.maskells.co.uk) [sales@maskells.co.uk](mailto:sales@maskells.co.uk)