



GORE STREET SW7



GORE STREET

SOUTH KENSINGTON SW7

**A NEWLY REFURBISHED, EXCEPTIONAL THREE-BEDROOM MAISONETTE SET WITHIN
A HANDSOME, PERIOD BUILDING IN THE HEART OF SOUTH KENSINGTON.**



The property has been stripped back to the brick and refurbished to exacting standards. From a smart, private entrance at street level, the property has a generous hallway and strong sense of arrival. First floor accommodation comprises a bright, double-aspect reception room with wooden floors and a central fireplace. The spacious and sociable eat-in kitchen has a large island, bench seating and views out over a charming cobbled Mews below. On the same floor is a guest cloakroom and separate laundry. Second floor accommodation comprises a large Master-suite with dressing room and generous ensuite bathroom, two further doubles with good storage and a second sleek and modern bathroom. The property further benefits from two good attic spaces.



Situated between Gloucester Road and Queens Gate, it is very close to the open spaces of Hyde Park and only a short distance from both Gloucester Road and South Kensington underground stations. There are also a good selection of local shops and restaurants in the area.

3 Bedrooms • 1 Reception Room • 2 Bathrooms • 1,827 sq ft • EPC E

Tenure: Share of Freehold

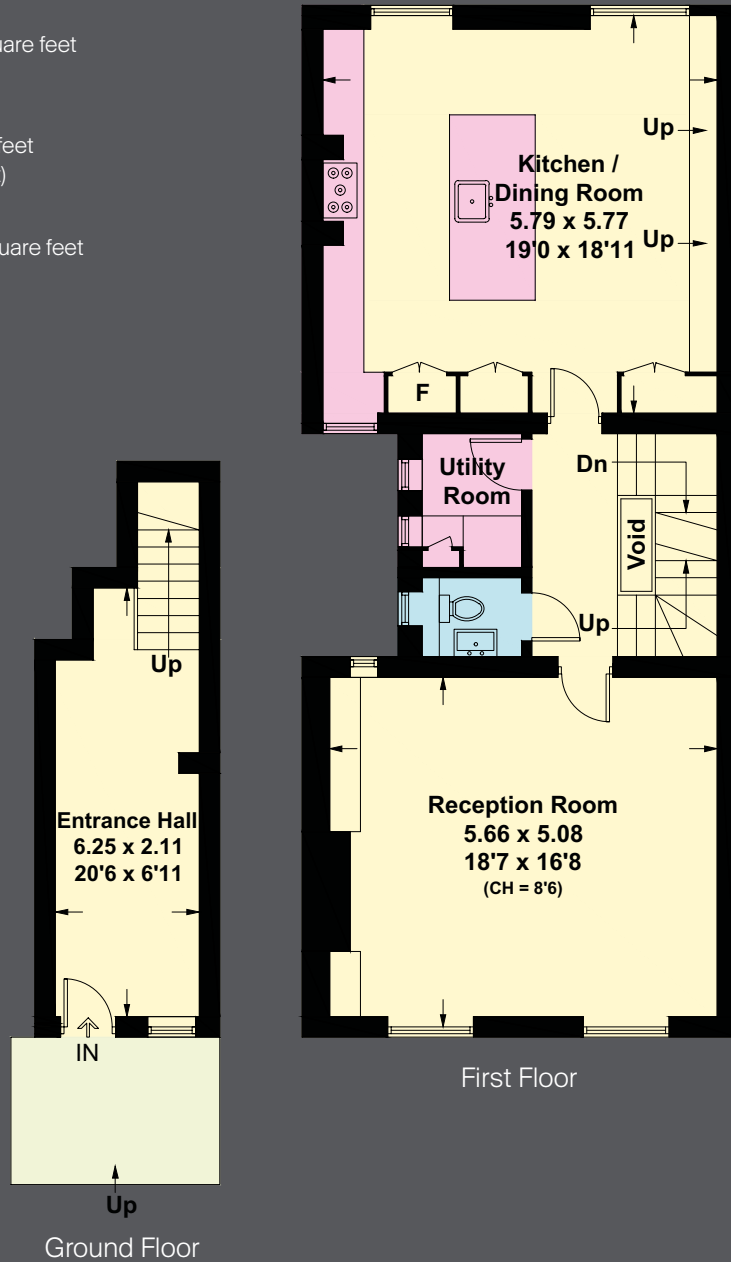
Local Authority: The Royal Borough of Kensington and Chelsea

Price on Application

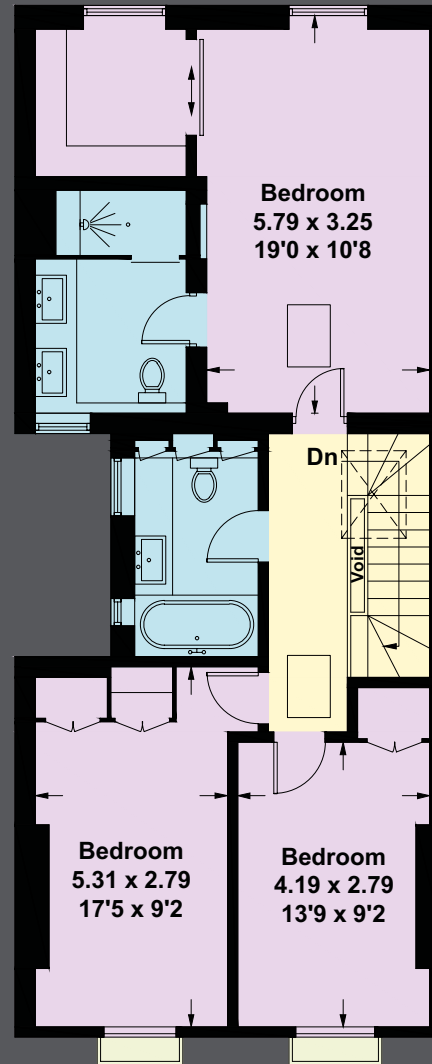
Gross Internal Area
169.7 square metres / 1,827 square feet
(Excluding Void/Attics)

Attics
18 square metres / 193 square feet
(Including reduced head height)

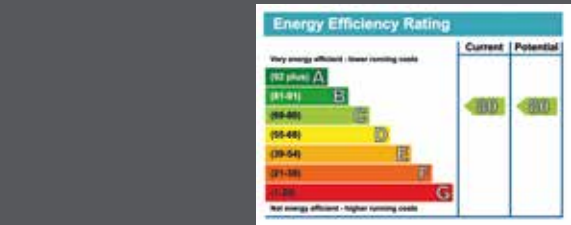
Total
187.7 square metres / 2,020 square feet



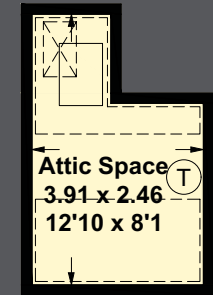
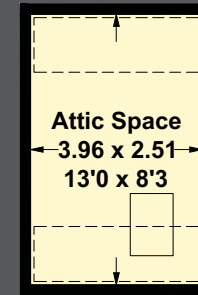
First Floor



Second Floor



= Reduced headroom below 1.5m / 5'0



Want to know more, ask our Sales expert Giles Barrett
giles.barrett@knightfrank.com

Important Notice 1. Particulars: These particulars are not an offer or contract, nor part of one. You should not rely on statements by Knight Frank LLP in the particulars or by word of mouth or in writing ("information") as being factually accurate about the property, its condition or its value. Neither Knight Frank LLP nor any joint agent has any authority to make any representations about the property, and accordingly any information given is entirely without responsibility on the part of the agents, seller(s) or lessor(s). 2. Photos etc: The photographs show only certain parts of the property as they appeared at the time they were taken. Areas, measurements and distances given are approximate only. 3. Regulations etc: Any reference to alterations to, or use of, any part of the property does not mean that any necessary planning, building regulations or other consent has been obtained. A buyer or lessee must find out by inspection or in other ways that these matters have been properly dealt with and that all information is correct. 4. VAT: The VAT position relating to the property may change without notice. Knight Frank LLP is a limited liability partnership registered in England with registered number OC305934. Our registered office is 55 Baker Street, London, W1U 6AN, where you may look at a list of members names.



MASKELLS

71 WALTON STREET, LONDON, SW3 2HT
+44 (0)207 581 2216
www.maskells.co.uk sales@maskells.co.uk

Knight Frank

South Kensington
020 7871 4120
knightfrank.co.uk