

# LIMERSTON STREET

CHELSEA SW10



A BEAUTIFULLY PRESENTED THREE BEDROOM FAMILY HOUSE IN THE DESIRABLE TEN ACRE ESTATE, CHELSEA, EXTENDING TO 1,893 SQ FT WITH ONE OF THE LARGEST GARDENS ON LIMERSTON STREET, AT 47 FT.



The house is entered on the raised ground floor into a wonderful light filled double reception room overlooking a private garden. The lower living level offers an open plan kitchen/dining room with direct access into the garden and separate utility room. The master bedroom suite occupies the whole first floor, and there are two well-appointed further bedrooms serviced by one further bathroom. The versatile living space offers a variety of layouts for modern family living and some houses in the street have divided the bedrooms on the top floor to create a fourth bedroom. Due to a Westerly aspect the house has an abundance of natural light throughout.

The house is within close proximity of the vast array of shops, bars and restaurants of the local area and there are excellent transport links to South Kensington Underground (District and Circle lines) and Fulham Broadway (District line), both 1 mile in distance.





## ACCOMMODATION

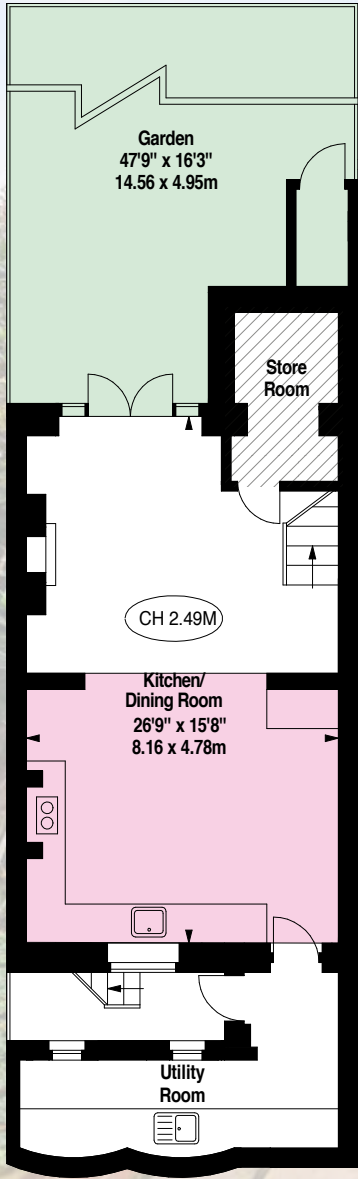
Master Bedroom with En-Suite bathroom | 2 Further Bedrooms | Family Bathroom | Double Reception Room | Kitchen/Dining Room | Guest Cloakroom | Utility Room | Store Room | Garden

## TERMS

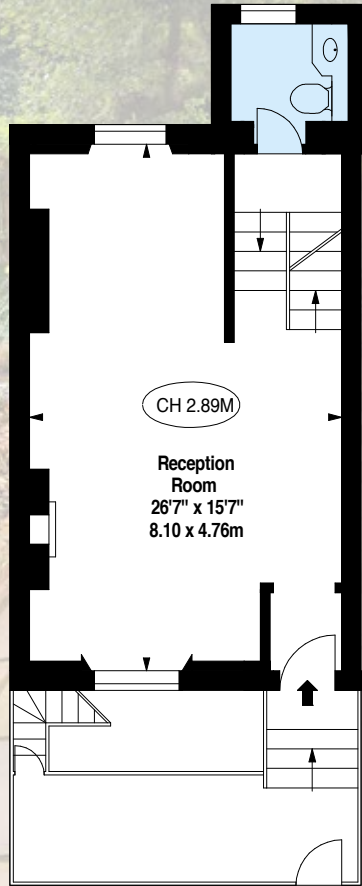
Tenure: Freehold

Local Authority: Royal Borough of Kensington and Chelsea

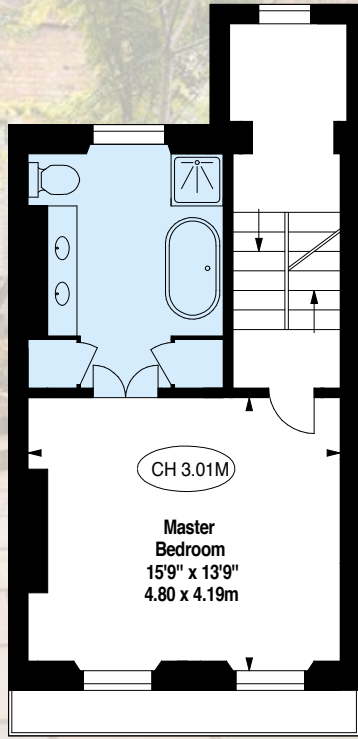
Price on Application



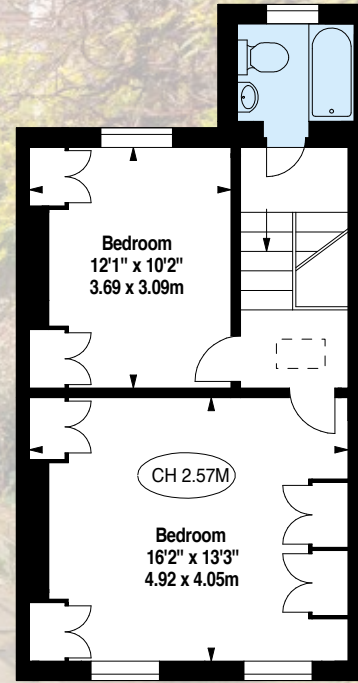
Lower Ground Floor



Ground Floor

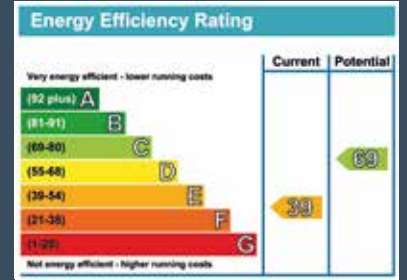


First Floor



Second Floor

Key :  
CH - Ceiling Height  
- Restricted Height



APPROX. GROSS INTERNAL AREA  
175.86 sq m | 1,893 sq ft  
Including Restricted Height Area



**MASKELLS** 

71 WALTON STREET, LONDON, SW3 2HT  
+44 (0)207 581 2216  
www.maskells.co.uk sales@maskells.co.uk

WE WISH TO ADVISE PROSPECTIVE PURCHASERS THAT WE HAVE PREPARED THESE SALES PARTICULARS AS A ROUGH GUIDE. WE HAVE NOT CARRIED OUT A DETAILED SURVEY OR TESTED THE SERVICES, APPLIANCES OR SPECIFIC FITTINGS. MEASUREMENTS ARE APPROXIMATE.