



Fabulous and rather rare to the market, this is a beautiful 2/3 bedroom split level flat, presented in excellent condition and benefitting from 2 reception rooms and 2 bathrooms. Situated in the heart of Covent Garden, but retaining a quiet disposition, a moments walk from the Piazza. EPC E

Retaining many period features, as well as utilising high quality fixtures and fittings, particularly in the bathrooms, and solid wood flooring, and large built in wardrobes in each bedroom this apartment is set over 4 floors, with over 1,000 Square feet (95 Sq m) of internal space.

VERY COOL 2/3 BEDROOM APARTMENT IN COVENT GARDEN • 2 BATHROOMS • PRIVATE ENTRANCE •

TERMS

£895 per week (£3,878.33 per calendar month)*

Furnished

*Please note fees may be applicable to potential tenants. Please ask us for more details.

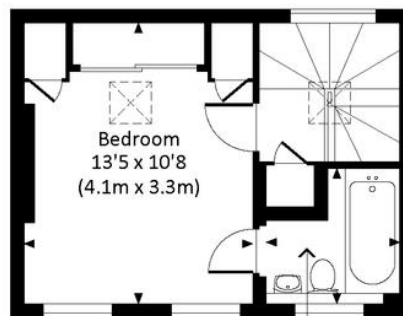


NEW ROW WC2N 4LA



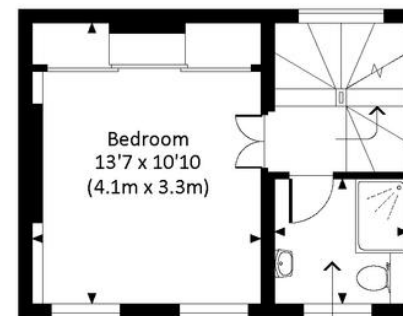
NEW ROW, WC2N

Approx. gross internal area
1022 Sq Ft. / 94.9 Sq M.



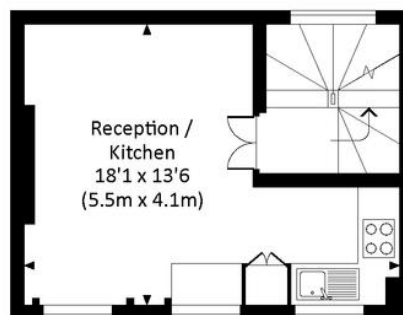
FOURTH FLOOR

6'6 x 6'6
(2.0m x 2.0m)

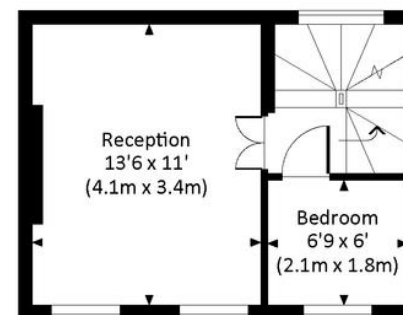


THIRD FLOOR

6'7 x 6'
(2.0m x 1.8m)



FIRST FLOOR



SECOND FLOOR



GROUND FLOOR

MASKELLS



71 WALTON STREET, LONDON, SW3 2HT
+44 (0)207 581 2216

www.maskells.co.uk sales@maskells.co.uk

