

The Marlborough, SW3



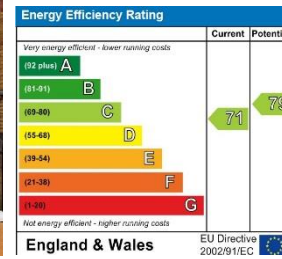
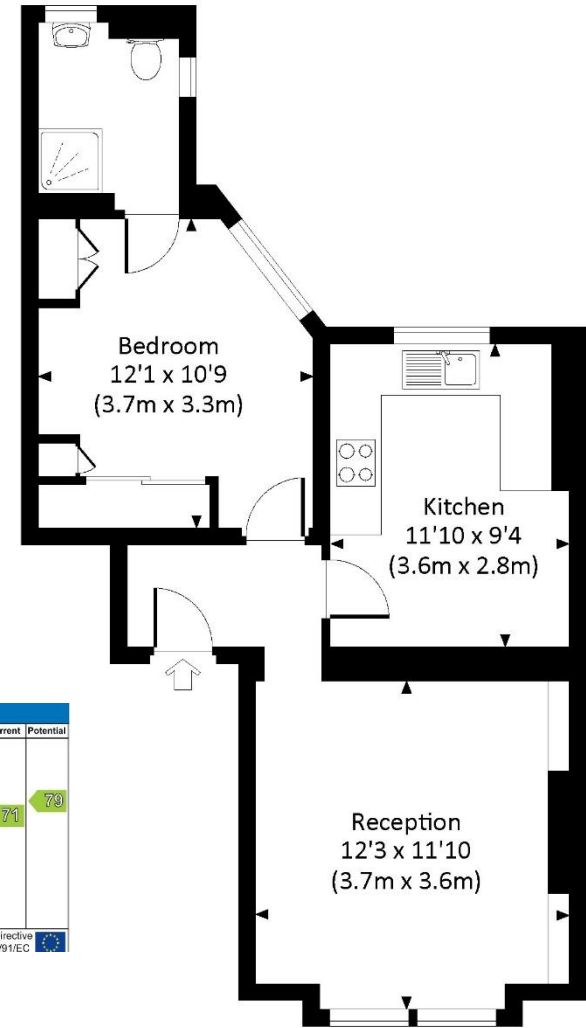
Occupying the first floor of a secure development with portorage, this is a 1 bedroom flat presented in good condition being sold on behalf of the Executor.

The Marlborough is a popular building, discreetly positioned off Walton Street and accessed through a gated entrance. Within easy reach are 3 underground stations to be found in Knightsbridge (Piccadilly Line), South Kensington (District, Circle and Piccadilly Lines) and Sloane Square (District and Circle Lines). Walton Street is well located for Harrods and the excellent shops, bars and restaurants to be found in the immediate area as well as the world class shopping to be found on Sloane Street and the Kings Road.



MARLBOROUGH, WALTON STREET, SW3

Approx. gross internal area
485 Sq Ft. / 45.1 Sq M.



FIRST FLOOR

All measurements have been made in accordance with RICS Code of Measuring Practice which are approximate only and only for illustrative purposes. For the avoidance of doubt, Dowling Jones Design shall not be liable for any reliance on these measurements. © 2017 www.dowlingjones.com 020 7610 9933



71 WALTON STREET, LONDON, SW3 2HT
+44 (0)207 581 2216

www.maskells.co.uk sales@maskells.co.uk

TERMS:

Guide Price: £775,000

Local Authority: The Royal Borough of Kensington and Chelsea

Tenure: Share of Freehold

Maskells Estate Agents Ltd does not accept any liability for inaccuracies in this brochure. These particulars and measurements are approximate and have been prepared in good faith. Potential purchasers must check all details.