



Sedlescombe Road London SW6

Turn of the last century home, beautifully renovated in a classical and conventional manner.

The property has 3 bedrooms all with ensuite bathrooms in addition to a well-appointed kitchen, charming entertaining rooms and a small walled garden.





The property benefits from excellent transport links to South Kensington, Gatwick (Coach journey 60 minutes.) and Heathrow. The house is moments away from West Brompton underground station. The North End Road Market is a stone's throw away.

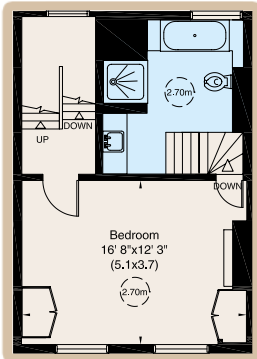
3 Bedrooms with En Suite Bathrooms • Reception Room • Dining Room • Kitchen
Guest Cloakroom • Basement • Patio Garden • EPC: E



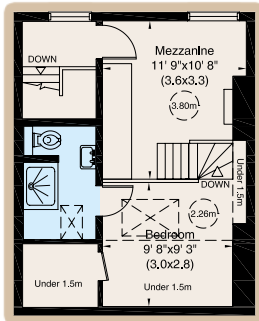
Tenure: Freehold

Local Authority: The London Borough of Hammersmith and Fulham

ASKING PRICE: £1,695,000



First floor



Second floor



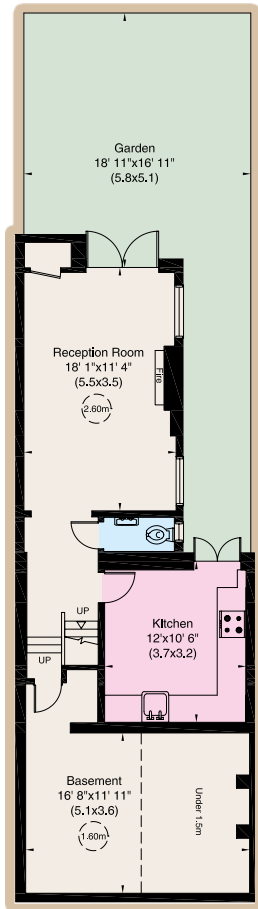
Gross Internal Area

178 square metres - 1,911 square feet

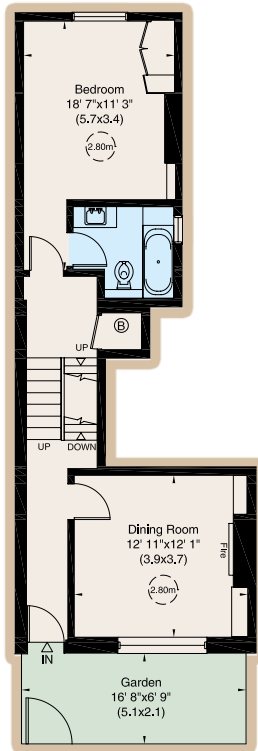
Including under 1.5m

161 square metres - 1,732 square feet

Excluding under 1.5m



Lower Ground floor



Ground floor



MASKELLS 

71 WALTON STREET, LONDON, SW3 2HT
+44 (0)207 581 2216
www.maskells.co.uk sales@maskells.co.uk

WE WISH TO ADVISE PROSPECTIVE PURCHASERS THAT WE HAVE PREPARED THESE SALES PARTICULARS AS A ROUGH GUIDE. WE HAVE NOT CARRIED OUT A DETAILED SURVEY OR TESTED THE SERVICES, APPLIANCES OR SPECIFIC FITTINGS. MEASUREMENTS ARE APPROXIMATE.