



A contemporary and well presented 2 bedroom apartment with air conditioning, situated on the second floor of a period building in this prime central Mayfair location, close to Green Park underground station. Energy Rating D.

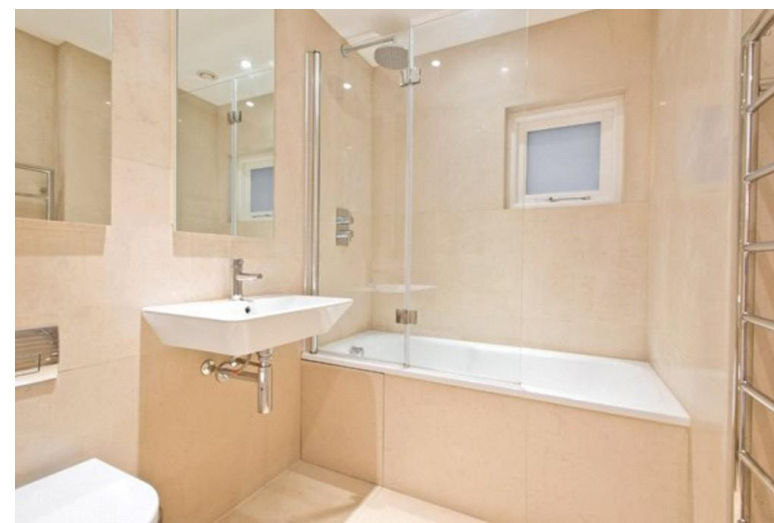
The property is located 0.3 miles from Green Park underground station (Jubilee, Piccadilly and Victoria lines) and 0.7 miles from Bond Street underground station (Central line).

LARGE LATERAL 2 BEDROOM 2 BATHROOM APARTMENT • AIR-CONDITIONING • CLOSE PROXIMITY TO GREEN PARK

TERMS

£805 per week (£3488.33 per calendar month)*

*Please note fees may be applicable to potential tenants. Please ask us for more details.



HERTFORD STREET W1J 7ST

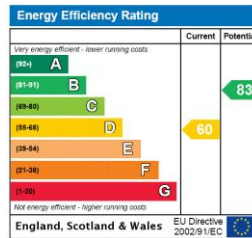


Hertford Street

Approximate Gross Internal Area
95.3 sq m / 1026 sq ft



Second Floor



MASKELLS



71 WALTON STREET, LONDON, SW3 2HT
+44 (0)207 581 2216

www.maskells.co.uk sales@maskells.co.uk

Viewmedia © 2014
viewmedia.co.uk